

AD

MANGO SEASON





PHOTO: MARIE LANGLEST.

PETER D'ASCOLI

WRITER

Designer Peter D'Ascoli works with handcrafted Indian textiles. On a recent visit to Rajasthan, D'Ascoli found, "a hidden gem in Shekhawati, an old ruined haveli brought back to life through the vision and talent of the stylish Maria Grazia Balcan". (pg 142)



PHOTO: SOHRAB PARAKH.

PANKAJ ANAND

PHOTOGRAPHER

Pankaj Anand is a regular with Condé Nast magazines, over a career spanning a decade now. In this issue, he shoots the cover story (pg 88). "The shoot for the Mango issue was the perfect creative experiment," says Anand.

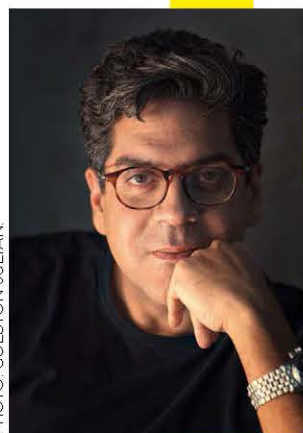


PHOTO: COLSTON JULIAN

SUNHIL SIPPY

PHOTOGRAPHER

Sippy has been a director of television commercials for over 25 years. As a photographer, nothing inspires him more than the serendipity of the street, the light and the magical unpredictability of the world around him. In this issue, he captures Pondicherry's yellow streetscape for AD (pg 104).



ASHISH SAHI

PHOTOGRAPHER

AD's former art director continues to shoot the most fabulous spaces for us. In this case, Deppura Garh (pg 142) in Rajasthan. "Deppura Garh is an extension of Maria Grazia's personality—so chic and fun. The highlight for me, though, was chasing peacocks with my camera at 6am."



PRIYANKA SHAH

STYLIST

AD's contributing editor, Shah works between the realms of design and art. "The first time I worked on a project with AD was for the Blue issue, so it was really exciting when the Mango cover story was mentioned to me. This has been a special project," says Shah (pg 88).



PHOTO: PERNILLE SANDBERG

BJÖRN WALLANDER

PHOTOGRAPHER

A New York-based photographer, Wallander loves to spend his time in India and is a regular contributor to AD. In this issue, he shoots the Rudrapada estate plantation house (pg 124). "To get to play with concrete shapes of the house with all lush greens around was so inspiring. I'm such a big fan of Niels's work," says Wallander.



RAJASHREE BALARAM

WRITER

A Mumbai-based journalist and scriptwriter, Balaram has been a long-time writer for AD. In this issue, she writes about the plantation house designed by Niels Schoenfelder near the hills of Kodaikanal (pg 124).



SEAN RAI-ROCHE

WRITER

London-based journalist, Rai-Roche's area of interest lies in architecture and design. In this issue he writes about a new book from Gestalten (pg 48) and Browns' new home in Brook Street, Mayfair (pg 64). "Reading the book, The Ideal City was as close to mixing work and pleasure as one can get."

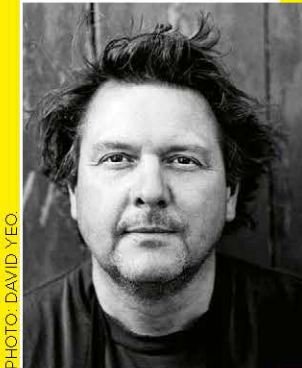


PHOTO: DAVID YEO

MARK LUSCOMBE-WHYTE

PHOTOGRAPHER

Luscombe-Whyte's portfolio includes shooting some of the best hotels, spaces and travel series. In this issue, he shares his photographs of Ed Tuttle's Paris home (pg 112). "I remember my day with Ed clearly. He was at the peak of his career, yet a charming and humble man. He will be greatly missed."



PHOTO: REBECCA CONWAY.

COSMO BROCKWAY

WRITER

Co-author of Glorious Hotels of India, in this issue, Brockway writes about late Ed Tuttle's apartment in Paris (pg 112). "He was an alchemist who knew how to conjure the spirit of a place, a man gifted by the gods."

PHOTO: PRETIKA MENON



EKTA RAJANI

STYLIST

A Mumbai-based stylist and creative consultant with over 20 years of experience, Rajani, in this issue, styled yet another remotely shot, but very exacting and super-fun series called Fresh Faces (pg 80).



BHARATH RAMAMRUTHAM

PHOTOGRAPHER

With a career spanning over 30 years and counting, Ramamrutham is a leading architecture and interiors photographer in the country and a regular contributor to AD. In this issue, he photographs contemporary, photographer Rohit Chawla's Tree House (pg 134).



SANA REZWAN

STYLIST

Founding director of The Art Lab, Rezwan specializes in the contemporary art market space. Rezwan is a committee member of the Artwalk NY, the Art Production Fund and a patron to The Metropolitan Museum of Art. In this issue, she styles a mood board for AD, "a cabinet full of curiosities ranging from art deco earrings to precious rose-quartz stones". (pg 174)



BIKRAMJIT BOSE

PHOTOGRAPHER

A fashion-art photographer, Bose's pared-down sensibilities and cinematic flair reflect perfectly in the series of portraits he has done for this issue (pg 80). "The homage to Erwin Wurm required a certain degree of interaction with the subject. That always makes for interesting imagery because everyone involved is consciously contributing to the creation of the images."



PHOTO: VEDANT SINGH

SHRUTI SINGH

WRITER

A Mumbai-based design and culture writer, Singh contributes to multiple titles under Condé Nast India. In this issue, she writes about Khageswar Rout's Annex and Dissever exhibit at Project 88 (pg 62).

F R E S H

In homage to Erwin Wurm's One Minute Sculptures, AD brings together a dream team of image-makers to create a series of portraits of new names from our address book

PHOTOGRAPHER BIKRAMJIT BOSE FASHION STYLIST EKTA RAJANI FOOD STYLIST PRIYANKA SHAH

F A C E S

GAUTAM RAJANI

Funnelling his years of experience working as the Commercial Director at fashion maisons such as Helmut Lang, Gucci and most recently at Dundas, Gautam Rajani launched SMR Days, a men's vacation-wear brand he co-founded last year with fashion veterans Adam Shapiro and Dan May. Based between London and New Delhi, Rajani planned a cross-country trip visiting craft clusters in India, and the trio merged techniques they discovered on the tour, such as bandhani, kantha embroidery and block printing, with relaxed suiting, drawstring trousers and lightweight jackets, reinterpreting the traditional techniques through contemporary, boxy silhouettes. For Rajani, the highlight of the venture is in collaborating with institutions that ensure good working conditions and fair wages for the karigars, and in giving back to the craft communities that the label champions.

ON GAUTAM: NAVY WORKWEAR JACKET, SMR DAYS. TEXT: RITUPRIYA BASU. ASSISTED BY: SHALINI KANOJIA.



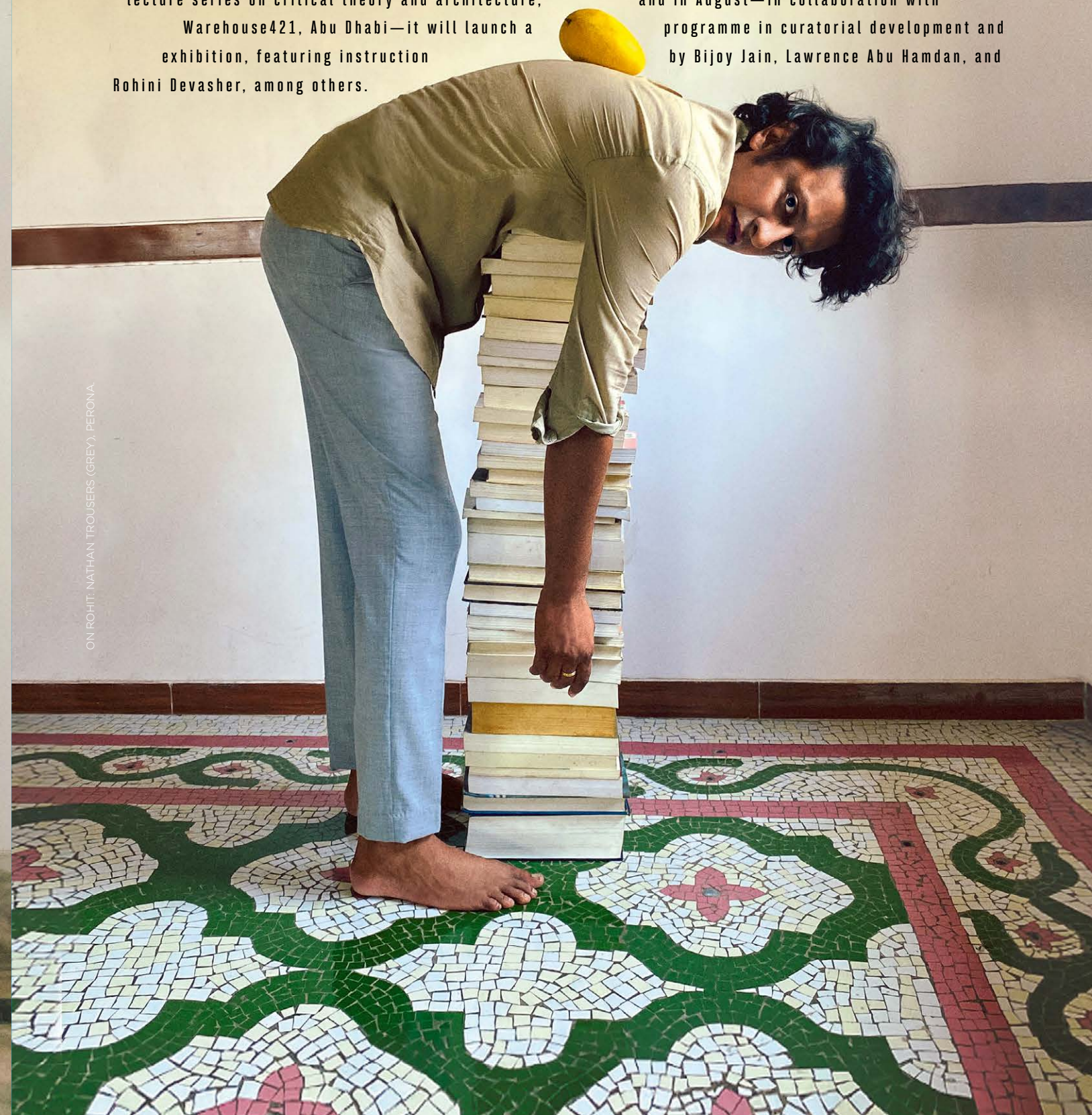
ADRIENNE THADANI

Since she began urban farming in Mumbai almost 12 years ago, Adrienne Thadani has co-founded a farming consultancy called Thrive, led the team that developed The Table Farm in Alibag, and built a community rooftop farm in the city, called Flyover Farm. Working with architects such as Case Design and a string of restaurants, she has spent years studying native-species landscaping, permaculture, regenerative farming practices, and set up farm-to-table systems to grow delicious and bountiful produce—all without the use of pesticides, fungicides or fertilizers. Since the lockdown, Thadani's been busy helping homeowners turn outdoor spaces and roof terraces into carefully landscaped gardens, while heading three initiatives dedicated to uplifting farmer livelihoods and building better food systems that value interconnectivity, and keep people and the planet at the forefront.

ROHIT GOEL

A series of online academic courses and lectures by the Bombay Institute for Critical Analysis and Research (BICAR)—founded in 2019 by Rohit Goel—became the most highbrow lockdown pastime for connoisseurs, leading gallerists and influential collectors. An eight-part course designed by Goel and Bijoy Jain included a walkthrough of Studio Mumbai's compound in Byculla and offered a view into Jain's latest work.

For Goel, 2021 is brimming with projects. In June, BICAR will inaugurate its Michael D Sorkin annual lecture series on critical theory and architecture, and in August—in collaboration with Warehouse421, Abu Dhabi—it will launch a programme in curatorial development and exhibition, featuring instruction by Bijoy Jain, Lawrence Abu Hamdan, and Rohini Devasher, among others.



ON ROHIT: NATHAN TROUSERS (GREY), PERONA

SRIJAYA ANUMOLU

For Srijaya Anumolu, architecture and the craft of building spaces and objects had always been a passion, but so was photography.

An architect at Studio Mumbai, Anumolu recently collaborated with fellow architect and ex-colleague Mitul Desai for an exhibition of nightscapes turned into night lights, showcased earlier this year at 557 Bakri Adda, a sliver of space carved out for exhibitions, tucked right next to Studio Mumbai. The nightscapes were the perfect meeting point for her interests; she turned photographs into backlit night lights held in rosewood frames, filtering her multifaceted skills as a photographer, designer and architect.



ON SRIJAYA: VIEL (TROUSERS: WHITE), PERONA

Years spent in the company of artists and in perfecting his craft as a diamondaire led Rahul Jhaveri to Studio Renn, a jewellery design practice he co-founded with his wife, Roshni Jhaveri. Ever since they set up shop in 2018, the Jhaveris have been obsessed with ideas of abstraction, taking notes from the natural world to create

RAHUL AND ROSHNI JHAVERI

their sculptural pieces of jewellery that sometimes echo the curling shapes of dried orange peel or the folds of wood ear mushrooms. Mentored and championed by collector Czaee Shah, Studio Renn is driven by an exploration of forms, textures and techniques; their creations are often a bit off-centre, but always beautifully imperfect.



DIVESH ASWANI

After graduating from Le Cordon Bleu Sydney Culinary Institute and training in many restaurants across Sydney and the Maldives, Divesh Aswani joined the team of The Table and the Magazine Street Kitchen as Head Chef, a position he left behind just over a year ago to start his passion project, Commis Station.

A gourmet home-delivery service launched during lockdown, Commis Station brings made-to-order baked goods, pantry staples, condiments and ice creams to the doorsteps of Mumbaikars, helping them whip up restaurant-quality food at home. Currently starring on the menu are a tonka-bean ice cream, toasty hot cross buns and a glistening guacamole with slivers of jalapeno.



HARSHITA JHAMTANI

Following a degree in architecture from Mumbai University, a course in Furniture Design from Florence Institute for Design International, and a stint at JSW's steel-furniture brand Forma, Harshita Jhamtani founded her eponymous design studio in 2019 as a playground to experiment with diverse materials like stone-based terrazzo and stoneware clay.

At the beginning of the lockdown, she taught herself to use a potter's wheel, which is when she began to explore ceramics. Her first collection of lamps soon followed, which referenced organic forms inspired by nature. Using locally available materials, Jhamtani prefers to work with her hands—eschewing moulds—to create a range of objects in which no two pieces are exactly the same.



ON HARSHITA: NARWHAL PANT SUIT (LILAC), LITTLE THINGS STUDIO. ON DIVESH: FRENCH TERRY COAL SWEATSHIRT, CITYOF_